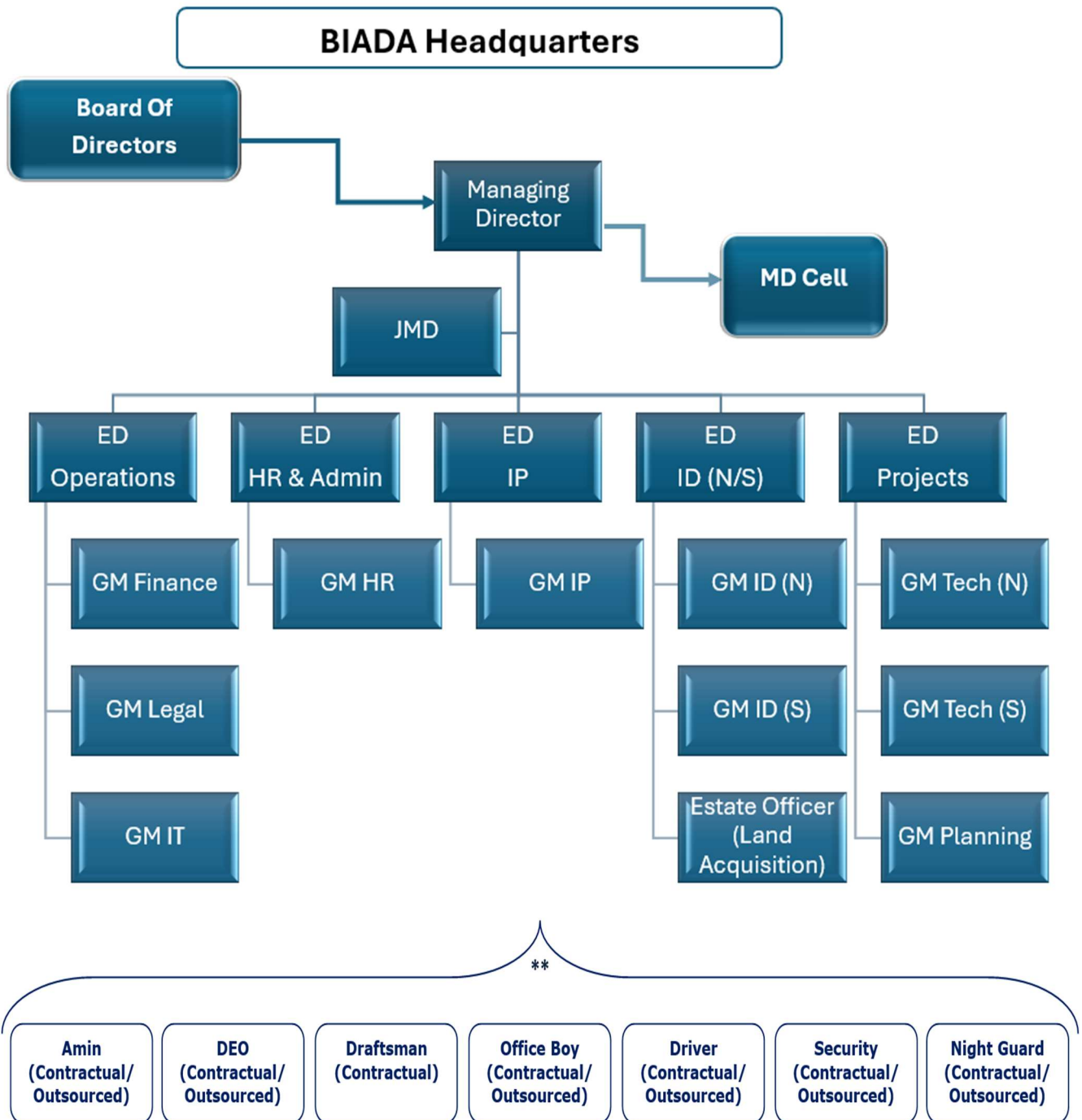


Flow chart of structure:

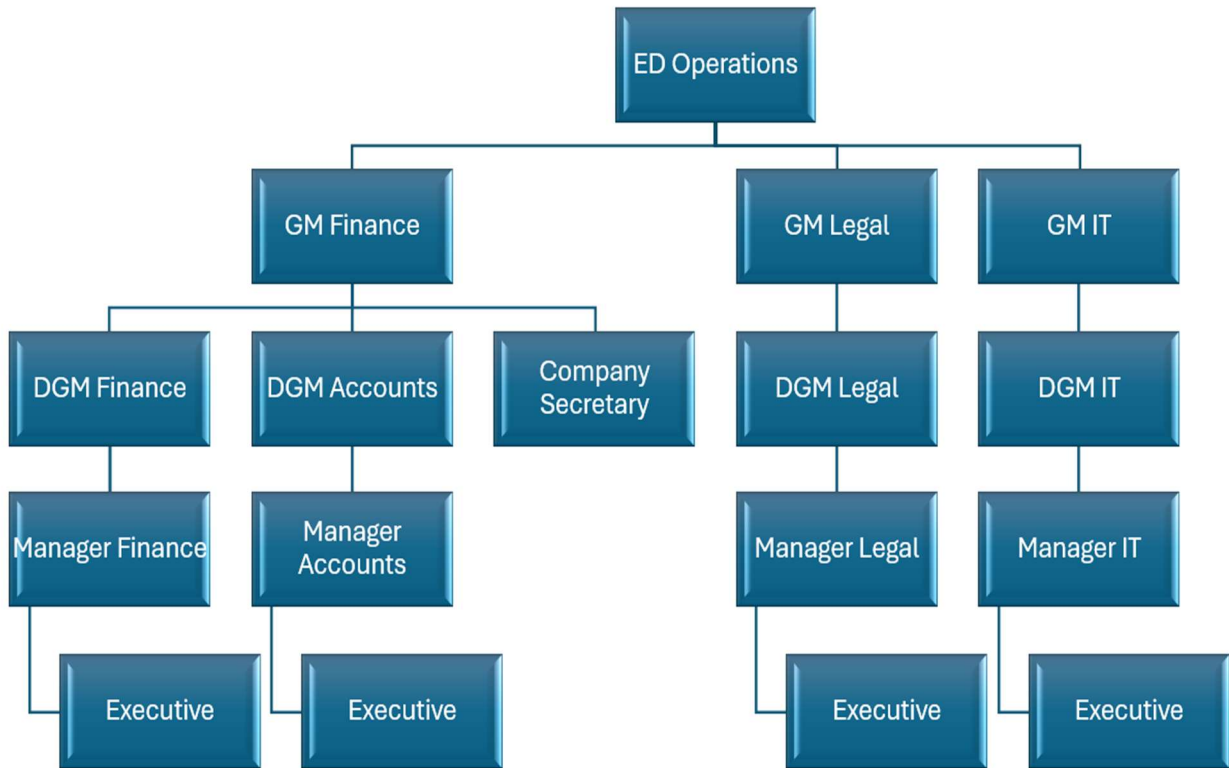


\*\* As per requirement

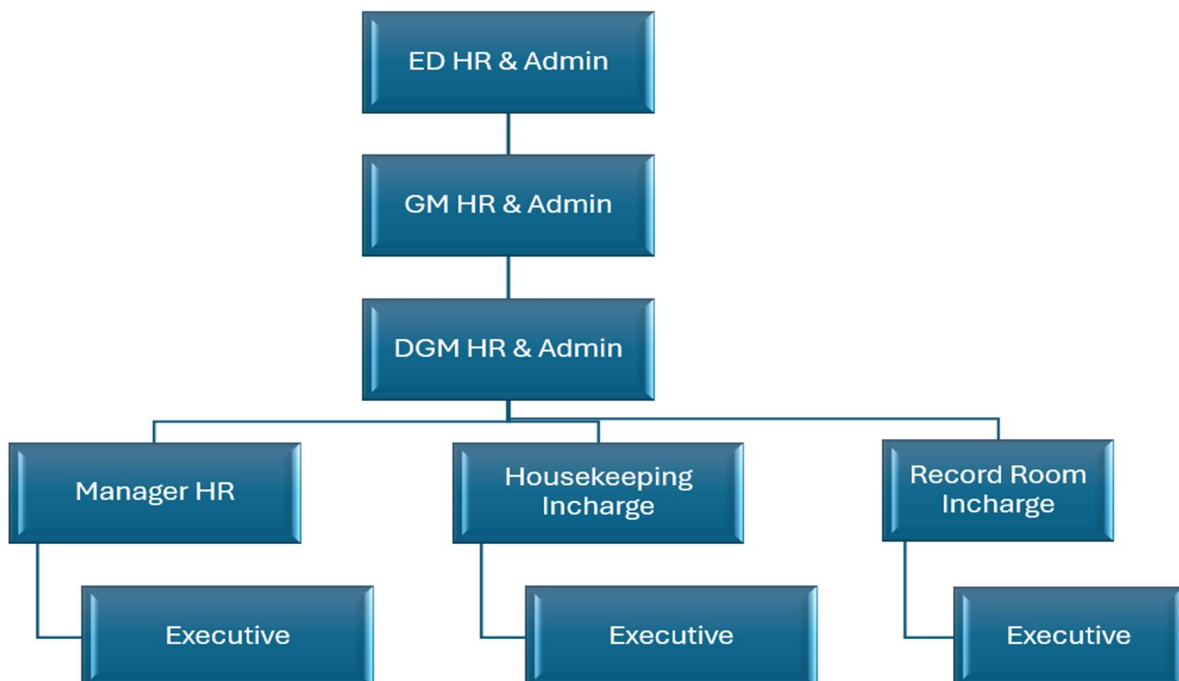
*Disclaimer: ED HR & Admin may be appointed if/when required. Otherwise, ED Operations remains in charge of ED HR & Admin.*

**Figure 2: Organizational Structure of BIADA – HQ**

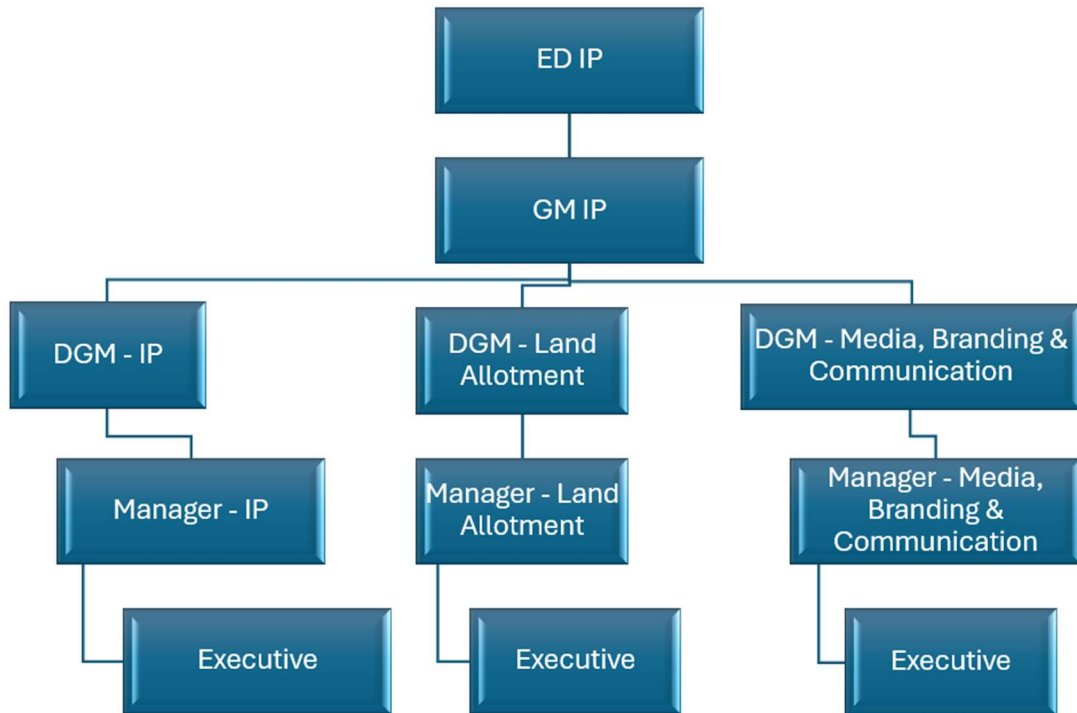
**Section-wise Organogram - Operations**



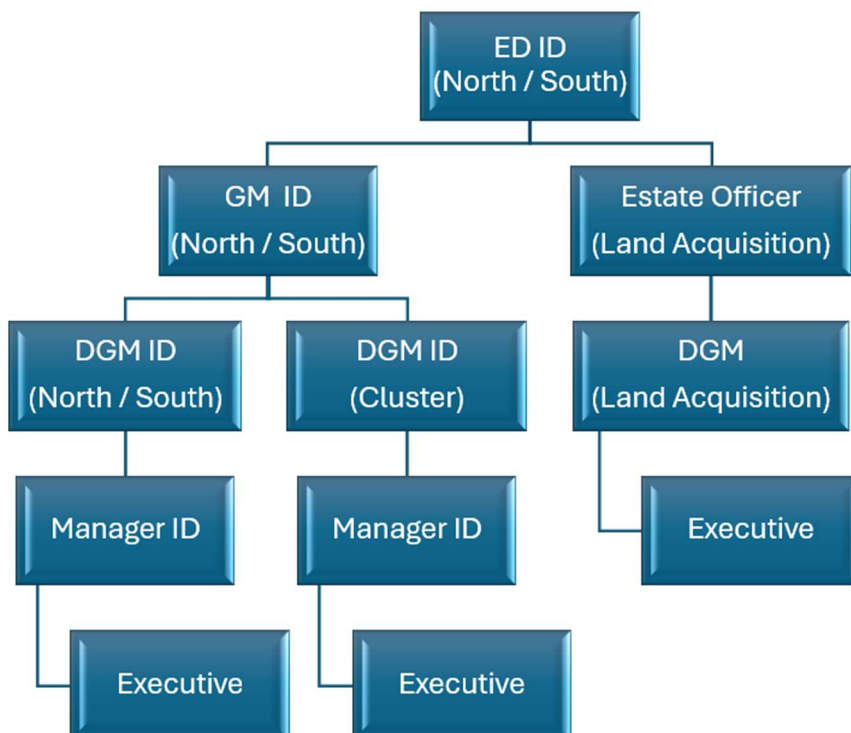
**Section-wise Organogram – Human Resource & Administration**

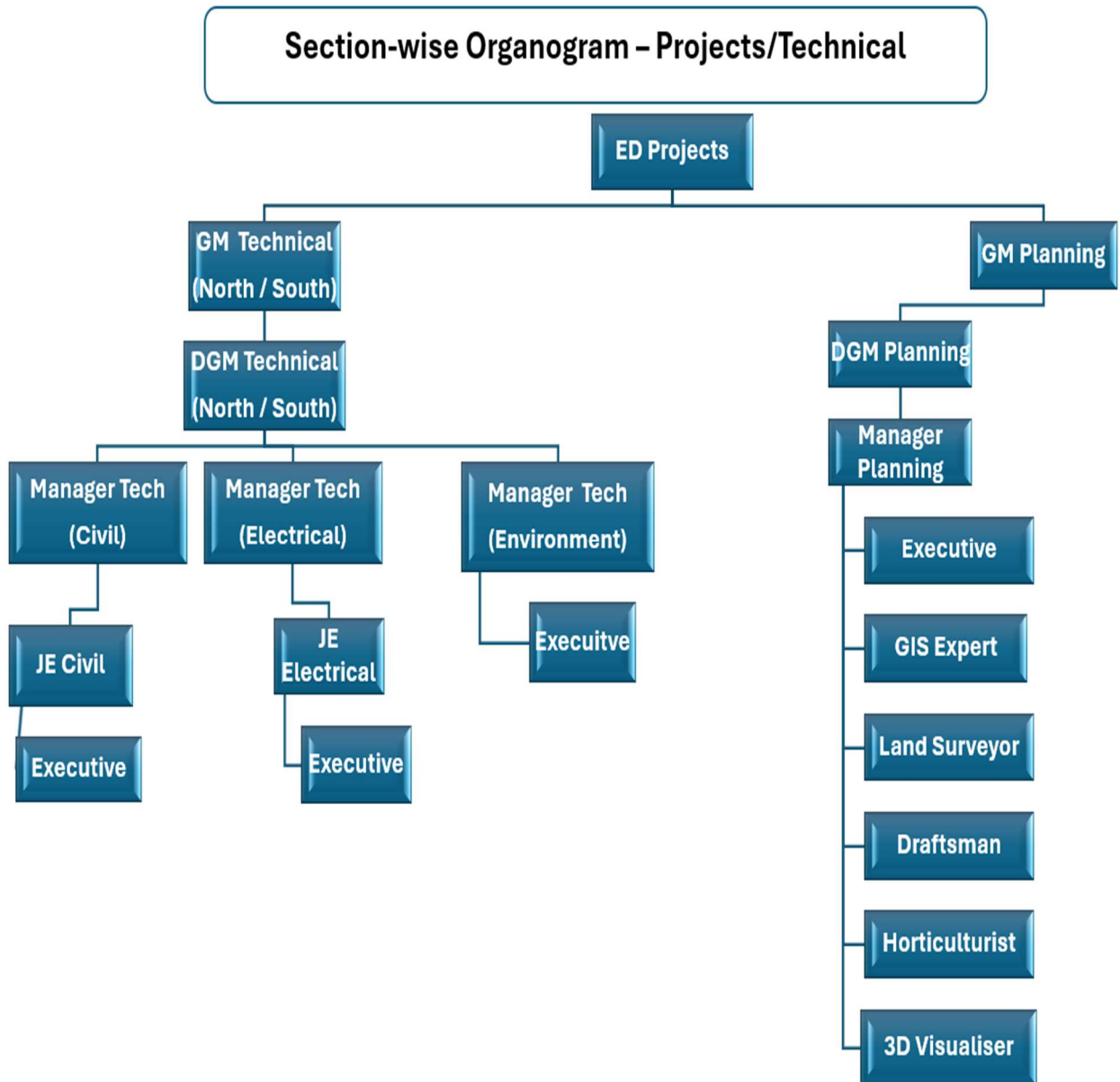


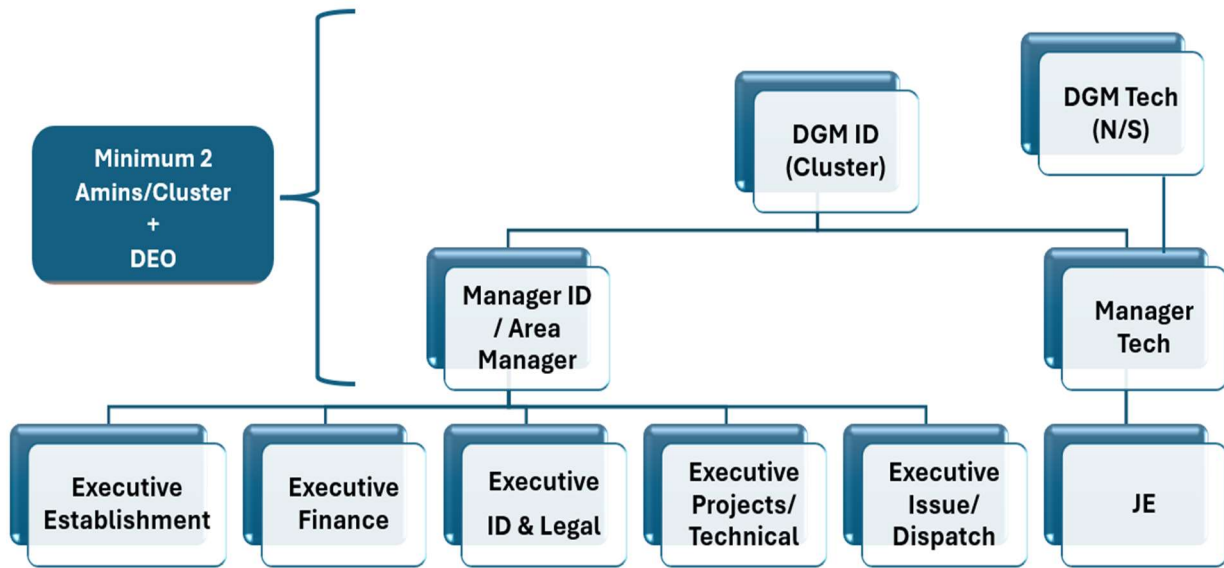
**Section-wise Organogram – Investment Promotion**



**Section-wise Organogram – Industrial Development**







**Figure 3: Organizational Structure of BIADA – Cluster Office**



**Figure 4: Organizational Structure of BIADA – Area Office**